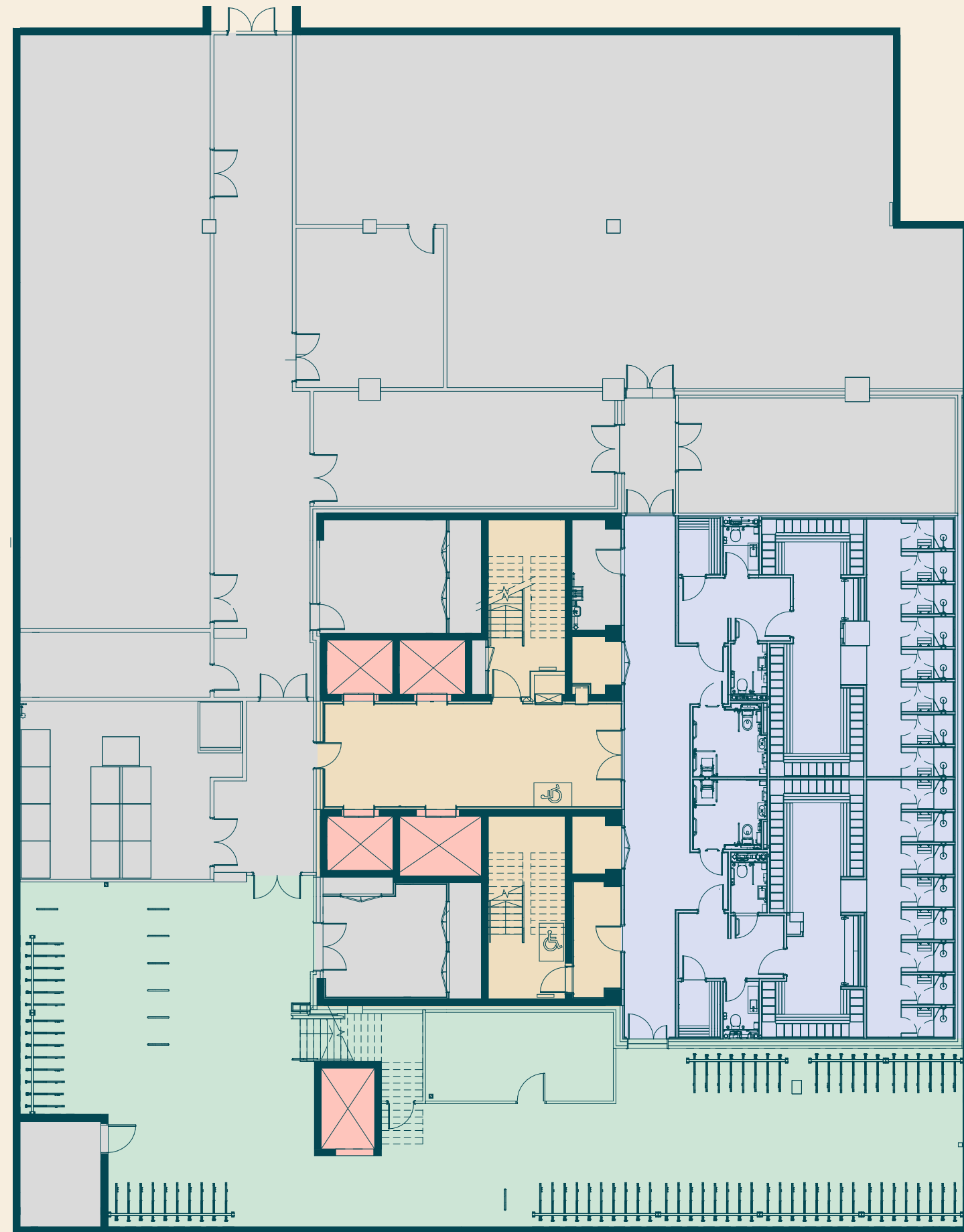




Floor plans

Basement

1,909 sq ft (177 sq m)

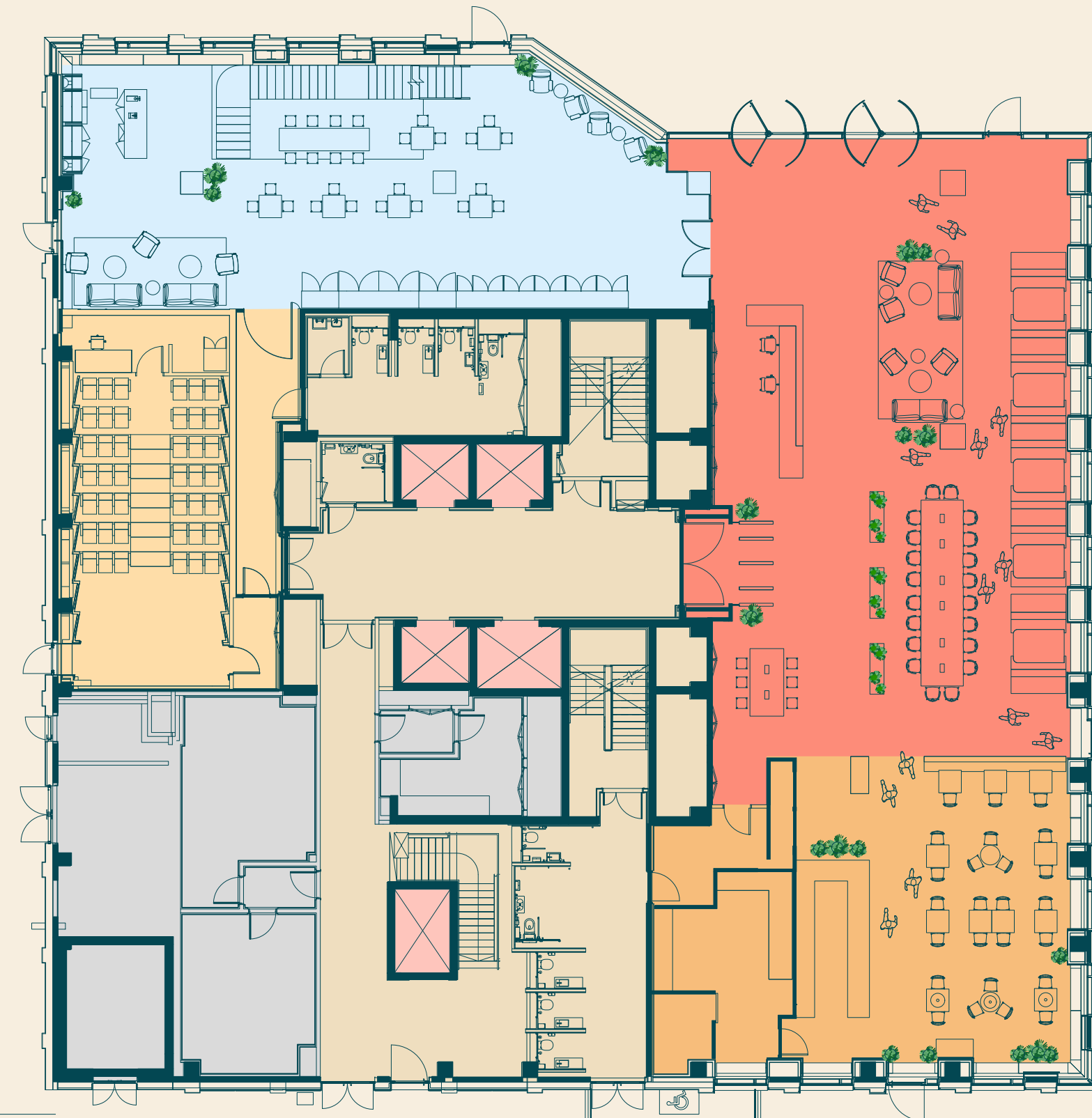


Key

- Cycle Parking
- Changing Rooms
- Ancillary
- Core
- Lifts

Ground

8,007 sq ft (744 sq m)

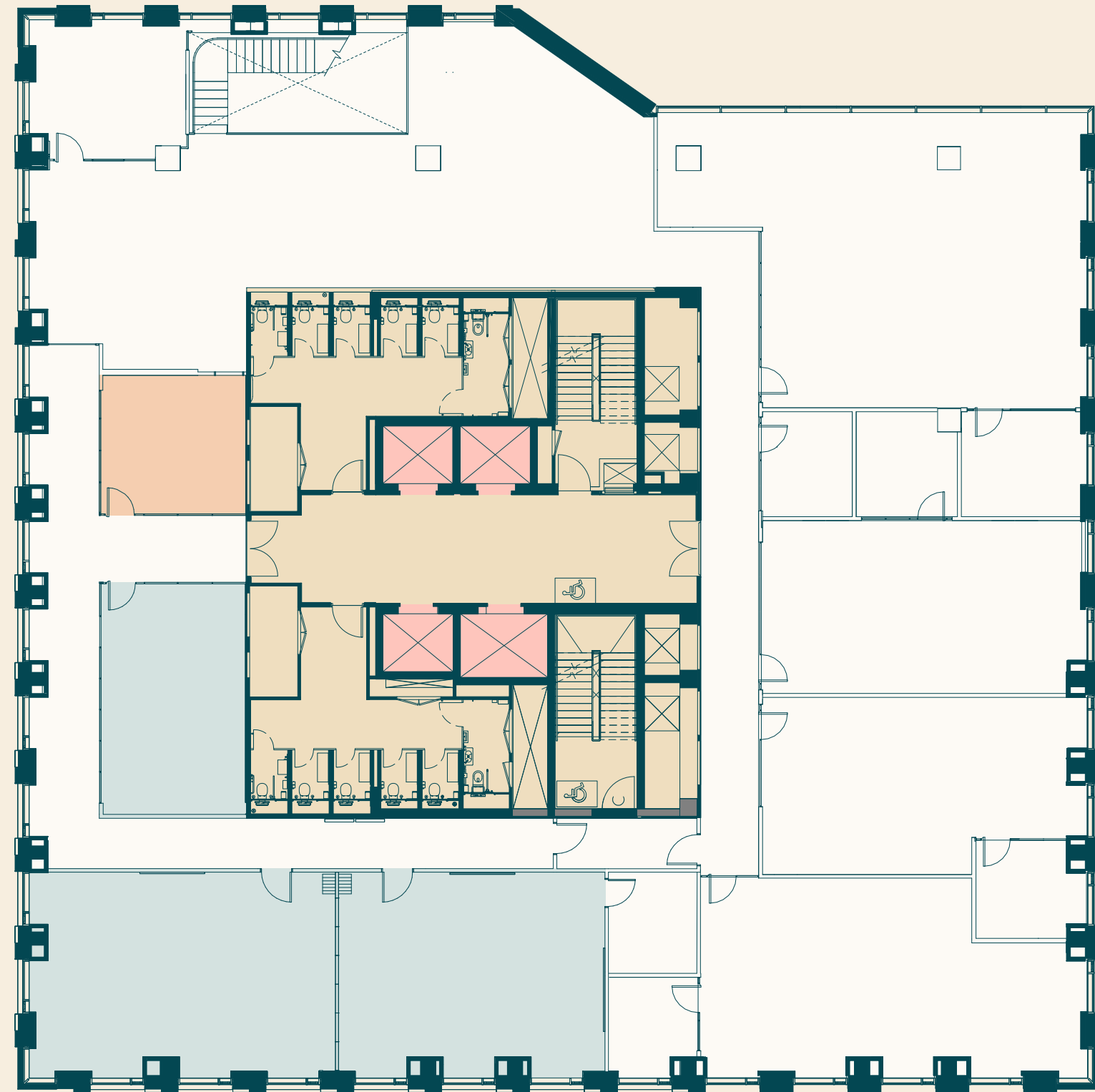


Key

- Reception
- Café
- Lab space
- Cinema-style theatre
- Ancillary
- Core
- Lifts

Communal facilities

Training rooms and Podcast studio

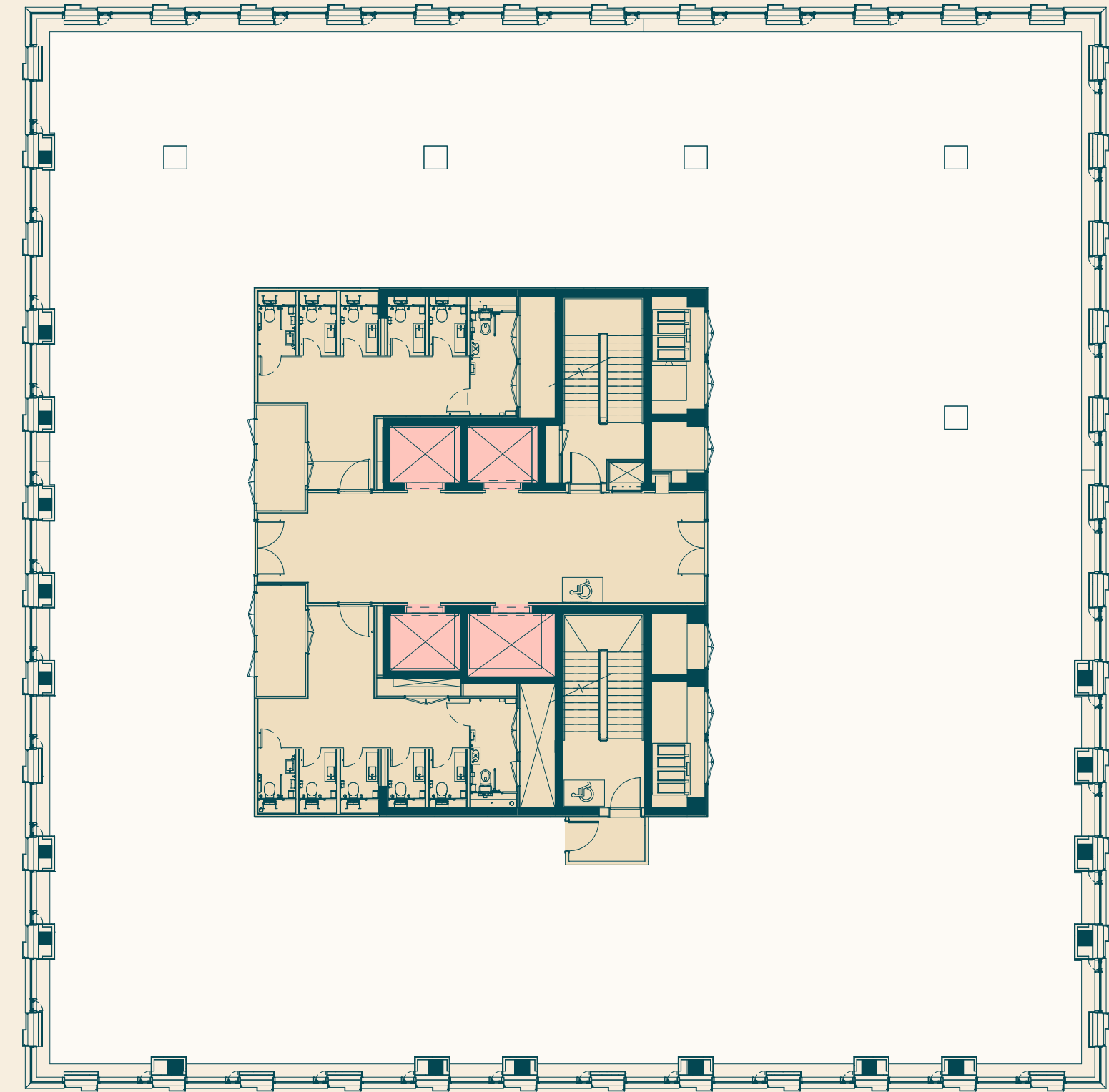


Key

- Office
- Training rooms
- Podcast studio
- Core
- Lifts

Typical floor

10,890 sq ft (1,012 sq m)

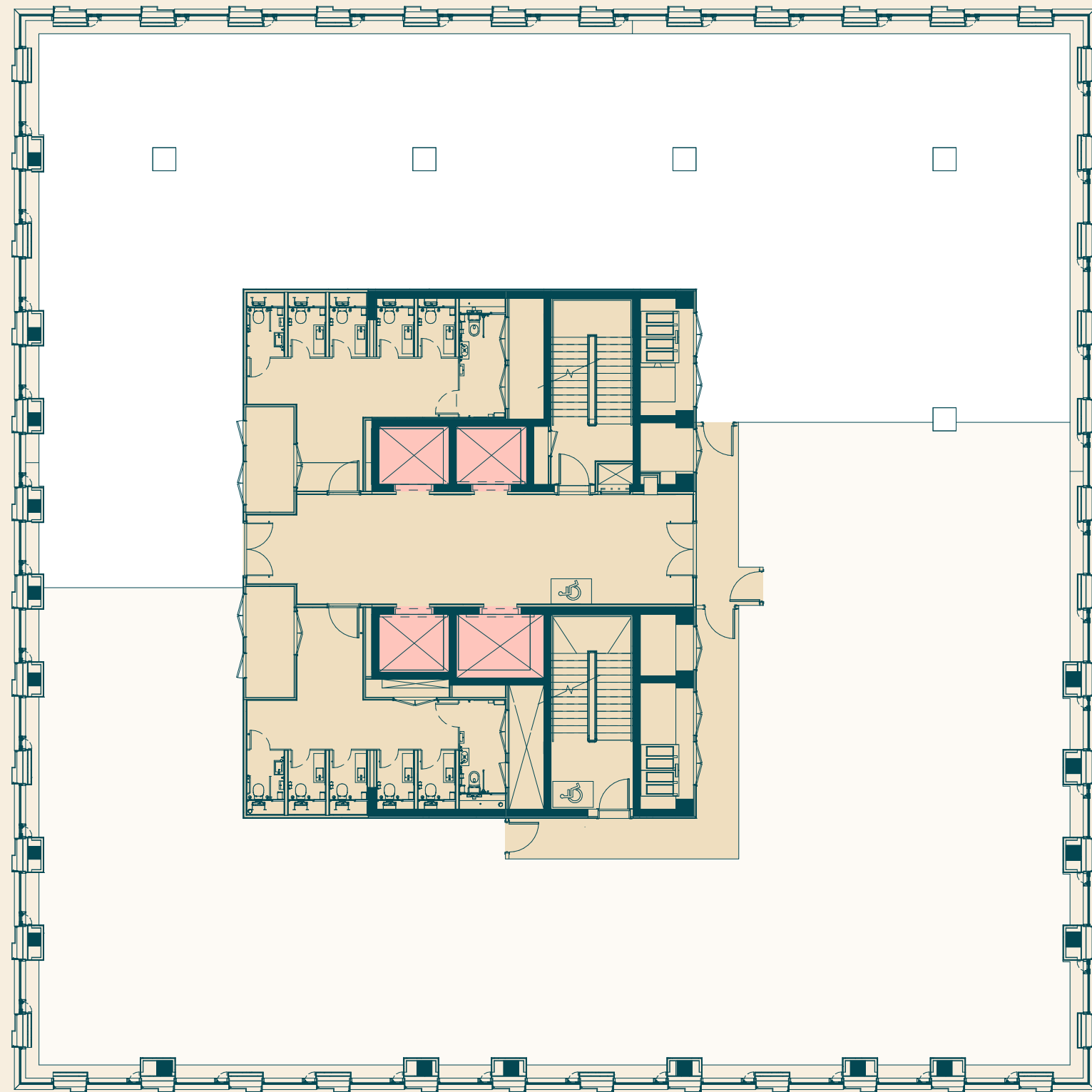


Key

- Office
- Core
- Lifts

Typical floor

Indicative floor split

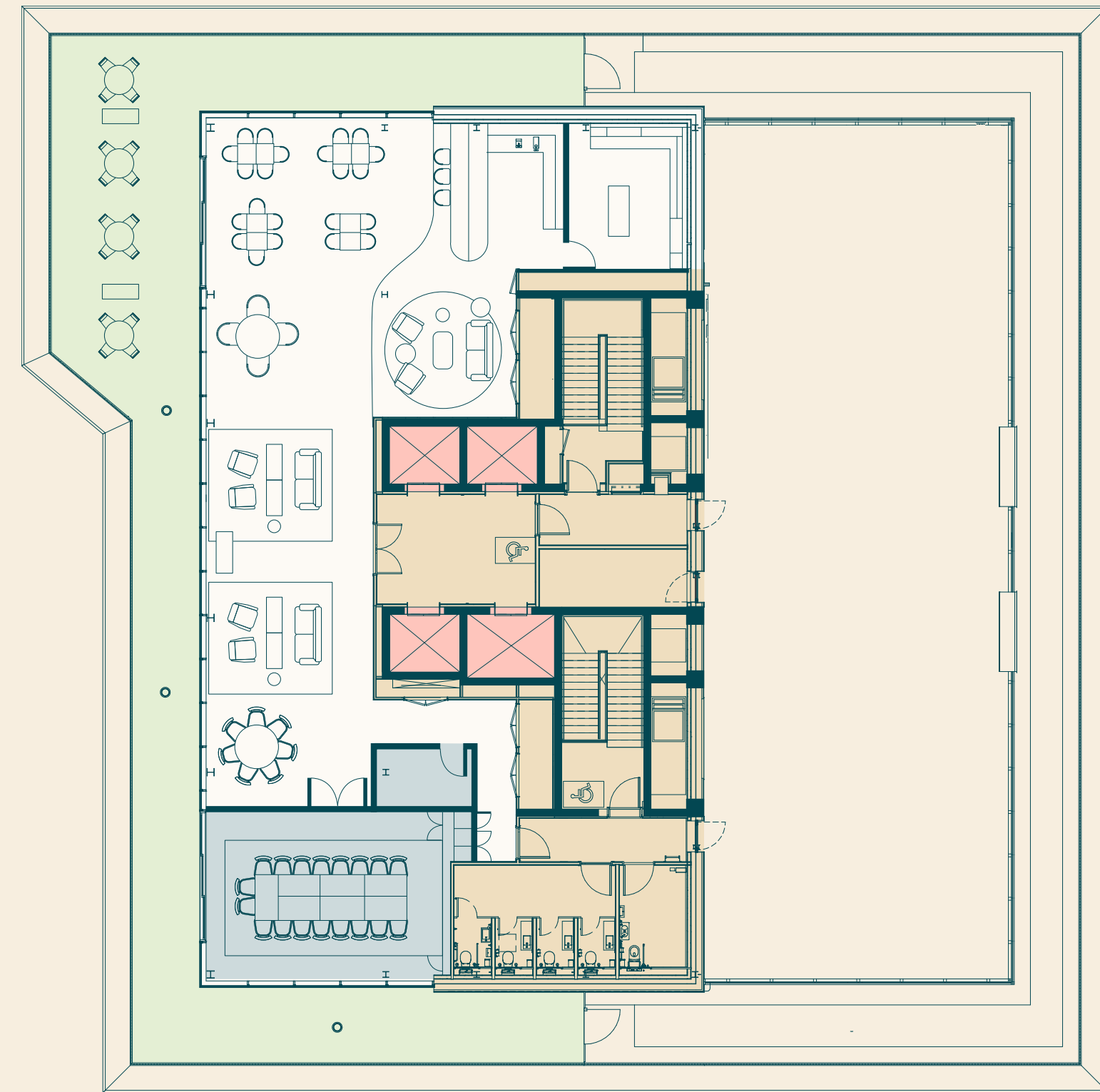


Key

- Office
- Core
- Lifts

9th floor

5,205 sq ft (484 sq m)



Key

- Communal Roof Terrace
- Office
- Boardroom
- Core
- Lifts

1EdCity.com

Sat Nav: W12 7PT



Jonathan Gardiner
jgardiner@savills.com
+44 (0)7870 555 703

Kate Miedzianowska-Sinclair
kate.msinclair@savills.com
+44 (0)7790 923 878

Olivia Jones
ojones@savills.com
+44 (0)7951 041 788



Rickie Jungman
rickie.jungman@arkonline.org
+44 (0)7710 092 494



Savills give notice that these particulars are set out as a general outline only for the guidance of intending Purchasers or Lessees and do not constitute any part of an offer or contract. Details are given without any responsibility and any intending Purchasers, Lessees or Third Party should not rely on them as statements or representations of fact, but must satisfy themselves by inspection or otherwise as to the correctness of each of them. No person employed or engaged by Savills has any authority to make any representation or warranty whatsoever in relation to this property. March 2024.